



Flight Plan & Site Survey

Created using **RPAS Wilco**®

Operation Name:	Stratford MC
Pilot Name:	██████████
Pilot Certificate:	██████████
Flight Start:	January 25, 2023 9:15 AM
Flight End:	January 25, 2023 11:15 AM
Flight Area (Latitude):	43° 21' 39.50" N (43.361)
Flight Area (Longitude):	81° 3' 49.50" W (-81.064)
Altitude - Radius:	Alt: 700 ft - Rad: 926.0 m (0.5 nm)
Airspace:	UNCONTROLLED
FIR - Contact:	CZYZ - 905-676-4509
Weather:	-1.8 Celsius - Snow, Freezing Drizzle/Freezing Rain, Overcast

Please ensure you received all required authorizations prior to flight.

Disclaimer

This Site Survey was created using RPAS Wilco by AIM Robotics. The flight plan contained is intended only for RPAS flights on the date/time and location specified. The user accepts all responsibility for the accuracy and completeness of the information contained.

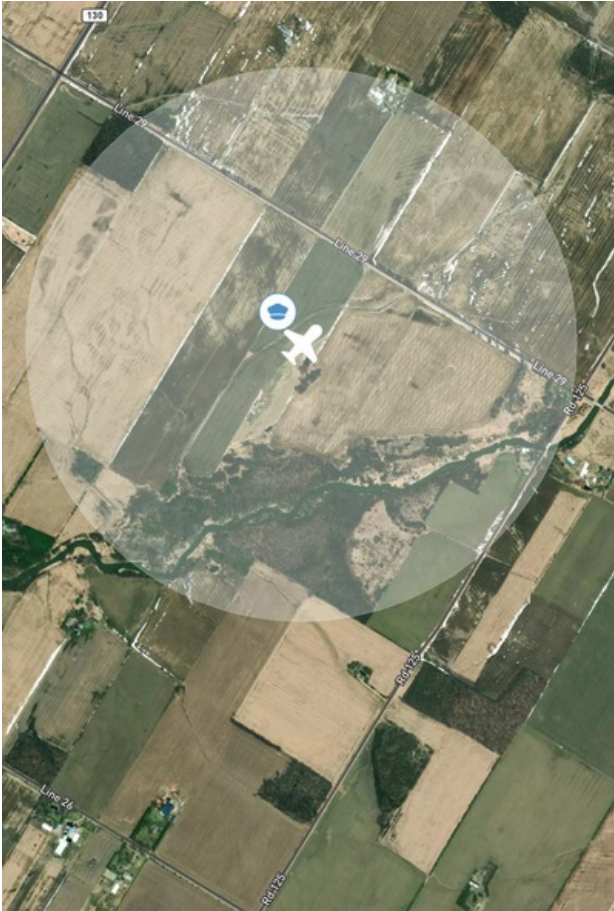
For the complete Terms & Conditions, see

<https://rpaswilco.com/#/tnc>



Included

- Site Survey
- Obstacles (if available)
- Nearby Aerodromes
- Canadian Aviation Regulations
- GFA
- Aerodrome Supplements
 - METAR & TAF (if available)
- NOTAMS
- CFS

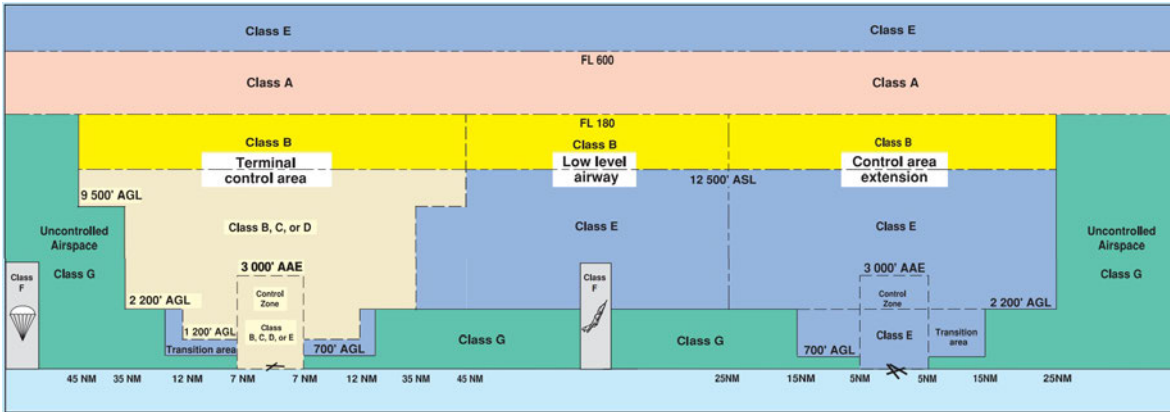
Flight Map



MAP Details

	Latitude	Longitude
 MODEL	43° 21' 39.50" N (43.361)	81° 3' 49.50" W (-81.064)
 Pilot	43° 21' 43.10" N (43.362)	81° 3' 53.10" W (-81.0648)

Airspace Classification



Overlying Airspaces

Class	Name	Floor	Ceiling
E	Southern Ontario Low Level Control Area CAE	6500MSL	12500MSL
B	Southern Ontario Low Level Control Area CAE	12500MSL	18000MSL
E	Toronto XPNDR MANDTRY	6500MSL	12500MSL
E	Southern Ontario Low Level Control Area CAE	2500MSL	6500MSL
E	Southern Ontario Low Level Control Area CAE	6500MSL	12500MSL
B	Southern Ontario Low Level Control Area CAE	12500MSL	18000MSL

Nearest Aerodromes & Distance from Operation

Aerodrome Name	Type	Lat	Long	Distance (KM)	Distance (NM)
STRATFORD MUNICIPALITY (CYSA)	AERODROME (Cert)	43.416	80.934	12.14	6.56
WATSON AIRFIELD (CLW4)	AERODROME (Reg)	43.106	81.239	31.708	17.12
LONDON (PIONEER AIRPARK) (CPN8)	AERODROME (Reg)	43.098	81.234	32.331	17.46
CHAPESKIE FIELD (CLC2)	AERODROME (Reg)	43.068	81.126	32.965	17.8

Weather Information for Mission Day

Summary: Cloudy skies throughout the day with snow.

Condition	Temperature	Feels Like	Precipitation	Visibility	Cloud Coverage	Wind Speed	Humidity
Snow, Freezing Drizzle/Freezing Rain, Overcast	1.8 Celsius	7.2 Celsius	100.0 %	4.3 Km	91.3 %	37.4 kph	94.1 %

ONTARIO

AERODROME/FACILITY DIRECTORY

STRATFORD MUNI ON

CYYA

REF	N43 24 57 W80 56 03 2NE 9°W UTC-5(4) Elev 1211' A5000 LO6 HI5 CAP	
OPR	Corp of the City of Stratford 519-271-4881/272-0933 Cert	
PF	A-1 C-2,3,4,5,6	
CUST	AOE/15 888-226-7277 14-22Z‡ Mon-Fri exc hols	
FLT PLN	FIG London 866-WXBRIEF (Toll free within Canada) or 866-541-4104 (Toll free within Canada & USA)	
SERVICES		
FUEL	100LL, JA	
OIL	15W50, 20W50	
S	1,2,3,4,5	
RWY DATA	Rwy 05(052°)/23(232°) 5003x100 asphalt Thld 23 displ 1031' Rwy 17(175°)/35(355°) 2699x50 asphalt	
RWY CERT	Rwy 05/23 AGN IIIB Rwy 17/35 AGN I	
TWY CERT	Twy B AGN I	
TWY	Twy B rstd day use only	
RCR	Opr Snow removal 13-22Z‡ O/T on request	
LIGHTING	05-AS(TE ME) P1, 23-(TE ME) P1, 17-(TE ME) AP, 35-(TE ME) AP 3.5° ARCAL-122.8 type K	
COMM	ATF UNICOM ltd hrs O/T tfc 122.8 5NM 4200 ASL	
PRO	Rgt hand circuits Rwy 17 & 23 (CAR 602.96). Rwy 35 climb rwy hdg to 1715 ASL BPOC.	
CAUTION	Ocsl deer crossing rwys.	

ONTARIO

AERODROME/FACILITY DIRECTORY

LONDON / WATSON AIRFIELD ON

CLW4

REF	N43 06 21 W081 14 22 7.1N 9°W (2017) UTC-5(4) Elev 935' A5000	
OPR	John Watson 519-453-2579 Reg PPR	
PF	D-1,2,3,4,5,6,7,8	
FLT PLN		
FIC	London 866-WXBRIEF (Toll free within Canada) or 866-541-4104 (Toll free within Canada & USA)	
RWY DATA	Rwy 08(078°)/26(258°) 1890x80 TURF	
RCR	Opr No win maint	
COMM		
ATF	tfc 123.2 5NM 4000 ASL excluding CYXU class "C" CZ	
PRO	Right hand circuit Rwy 26 (CAR 602.96)	
CAUTION	Trees on apch to Rwy 08. Hangar aprx 400' ENE of Rwy 08. Avoid farm bldgs. London (Pioneer Airpark) A/D 0.5NM SSE.	

ONTARIO

AERODROME/FACILITY DIRECTORY

LONDON (PIONEER AIRPARK) ON

CPN8

REF	N43 05 53 W81 14 04 6.7NNE 9°W (2016) UTC-5(4) ELEV 980' A5000	
OPR	Karl Pfister 519-951-7932 Reg	
PF	B-1 C-2,3,4,5,6	
FLT PLN		
FIC	London 866-WXBRIEF (Toll free within Canada) or 866-541-4104 (Toll free within Canada & USA)	
RWY DATA	Rwy 17(166°)/35(346°) 2090x80 TURF Rwy 08(078°)/26(258°) 1986x125 TURF	
RCR	Opr No win maint	
COMM		
MF	Sudbury rdo 119.4 0345-1120Z± 5NM centered on London A/D 5NM SE 3000 ASL (CAR 602.98)	
PRO	Right hand circuit on Rwy 17 & 26 (CAR 602.96). All circuits 2000 ASL. Do not overfly pig barn E and horse barn NW of aprt. Ctc London twr 119.4 prior to entering CZ and for extended circuit and above 2000 ASL in the London apch path. If equipped, establish radio ctc with London twr.	
CAUTION	P-lines aprx 60 AGL end Rwy 26. Trees adj to all thresholds. Possible deer on rwy. Possible high vegetation at all thresholds. High density tfc from adj airstrips.	

ONTARIO

AERODROME/FACILITY DIRECTORY

LONDON / CHAPESKIE FIELD ON

CLC2

REF	N43 04 06 W81 07 32 3NE 9°W UTC-5(4) ELEV 930' A5000	
OPR	Dr. H.H. Chapeskie 519-872-0109 Reg PPR	
PF	B-1 C-2,3,4,5,6	
FLT PLN FIC	London 866-WXBRIEF (Toll free within Canada) or 866-541-4104 (Toll free within Canada & USA)	
RWY DATA RCR	Rwy 07/25 2000x130 turf Opr No win maint.	
LIGHTING	07-(TE LO), 25-(TE LO) PN	
COMM TWR MF	London 119.4 125.65 (E) 1120-0345Z† at London A/D 2NM SW Sudbury rdo 119.4 0345-1120Z† 5NM centred on London A/D 2NM SW 3000 ASL (CAR 602.98)	
PRO	Ctc London twr prior entering CZ.	
CAUTION	Trees 250' fr thld Rwy 25, 45 AGL. Trees adj to rwy, both sides, at thld of Rwy 07. Possible deer on rwy.	